

## Pennsylvania Turnpike Commission

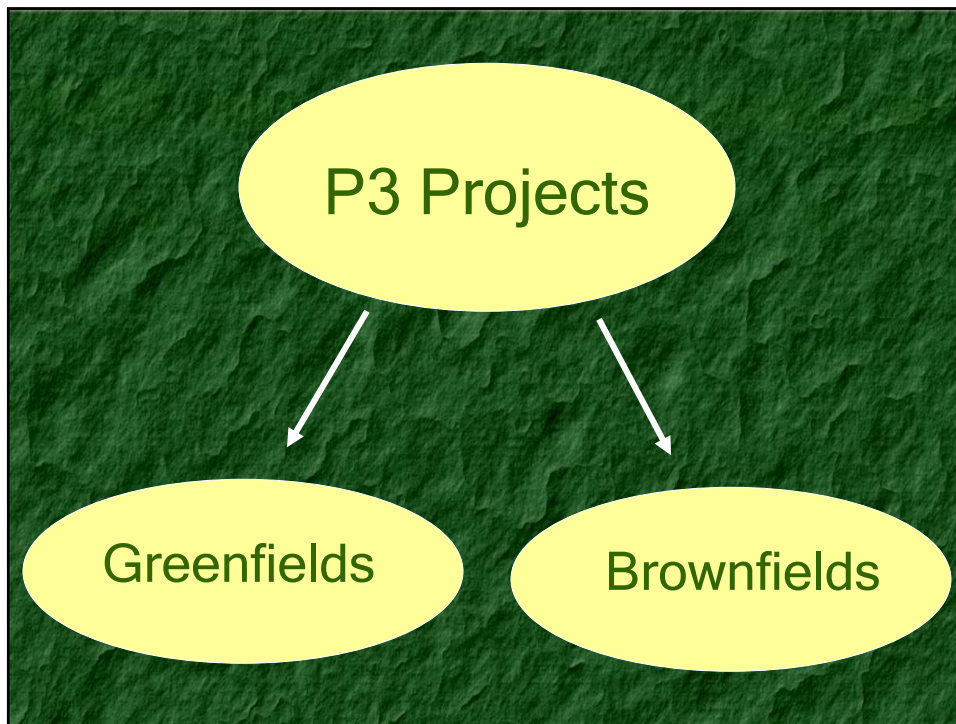
### Mon/Fayette & Southern Beltway Public Private Partnership

Pennsylvania Concrete Conference  
January 28, 2009



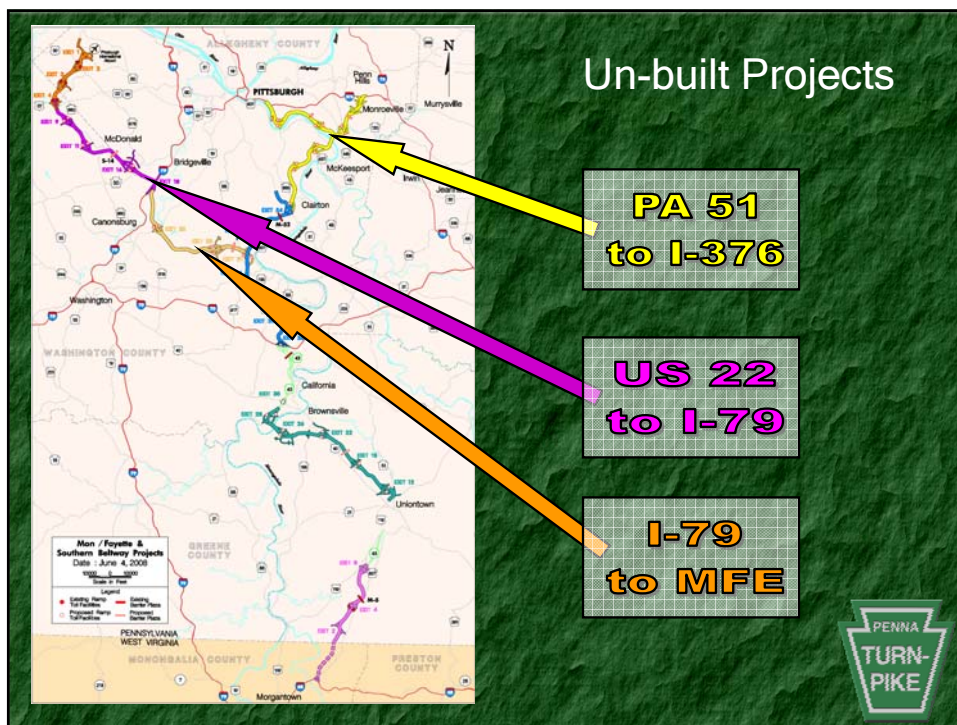
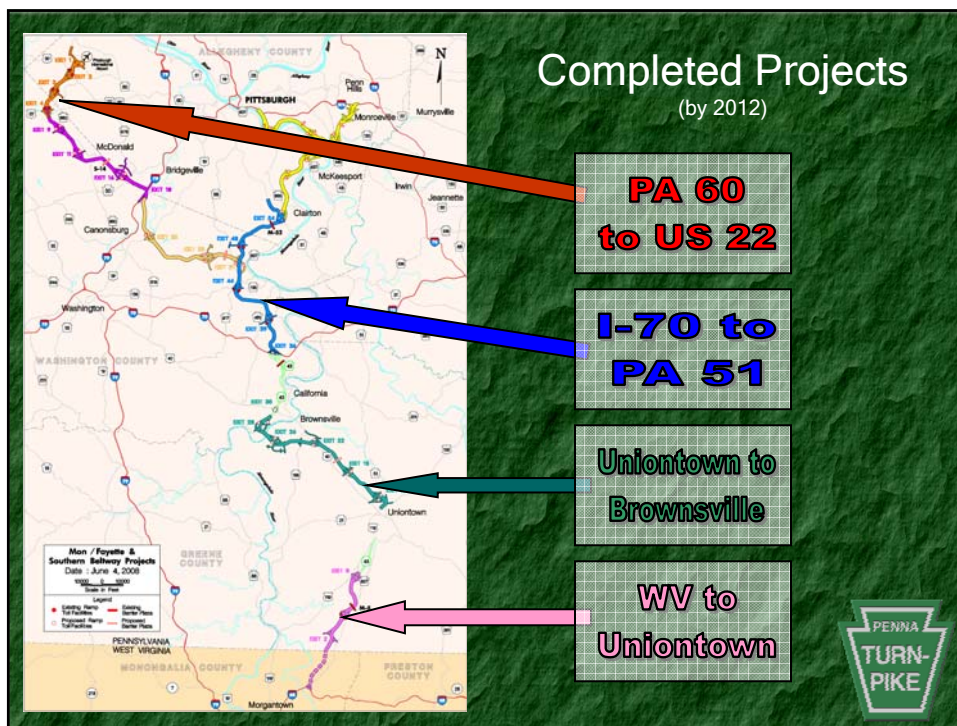
## Public-Private Partnership (P3)

**Definition:** A contractual agreement between public and private sector partners, that best meets clearly defined public needs through appropriate allocation of resources, risks and rewards.



**Mon/Fayette Expressway and Southern Beltway**


- MFE about 72 miles in length
- SB about 32 miles in length




**US 22  
to I-79**

### Southern Beltway

- US 22 to I-79
  - Design Phase
  - Received NEPA Clearance (ROD) on 09/03/2008
  - \$659 Million YOE
  - 13 miles
  - 3 Design Sections
  - ↳ ≈ 260 properties to be acquired







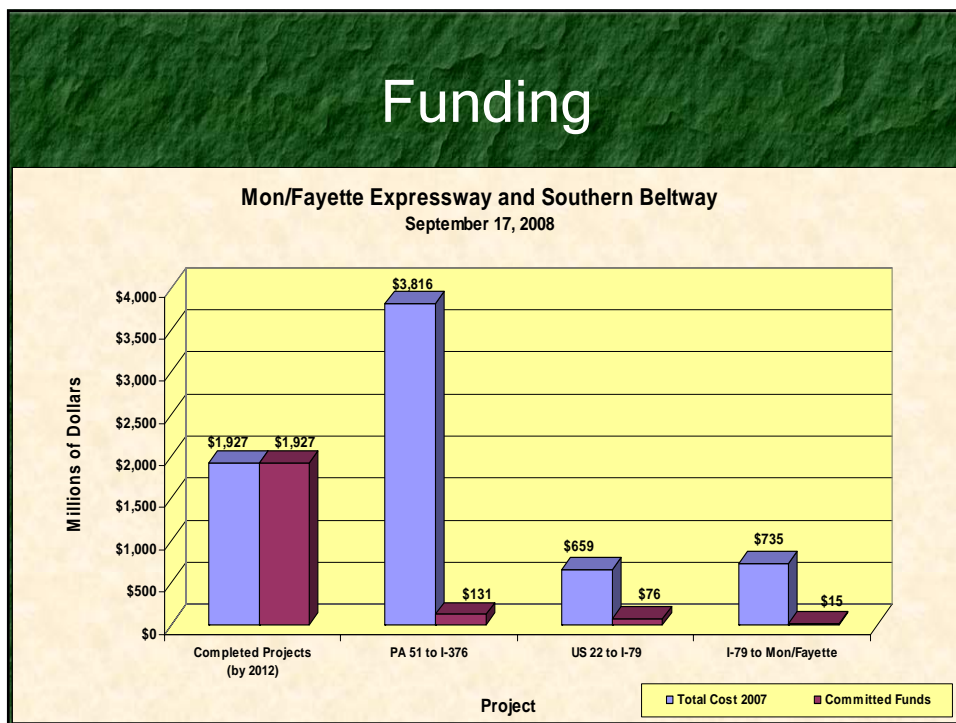
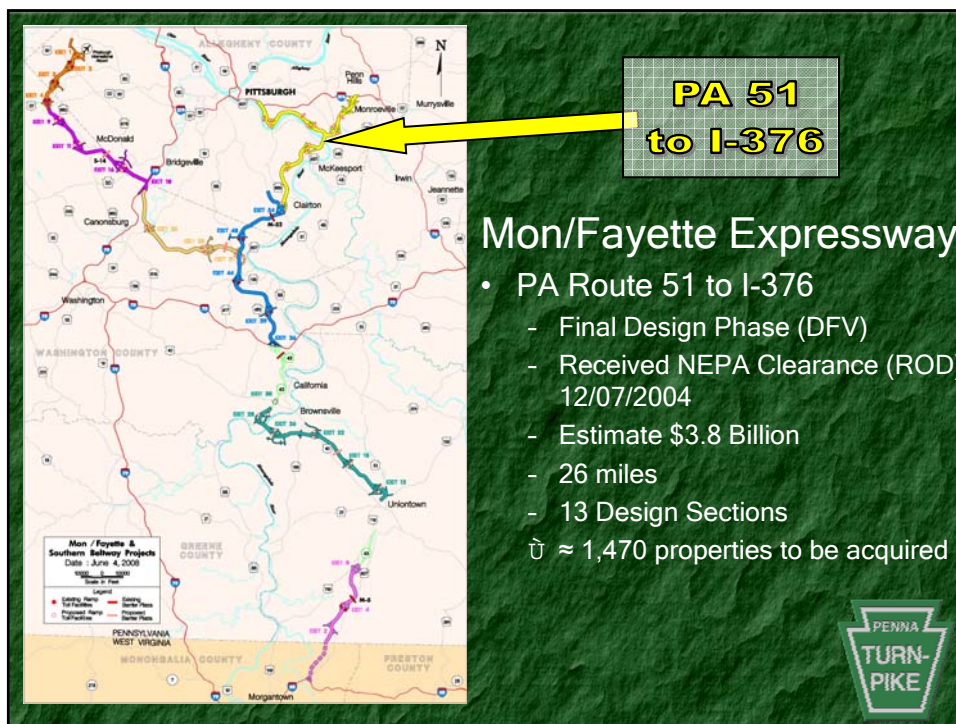
**I-79  
to MFE**

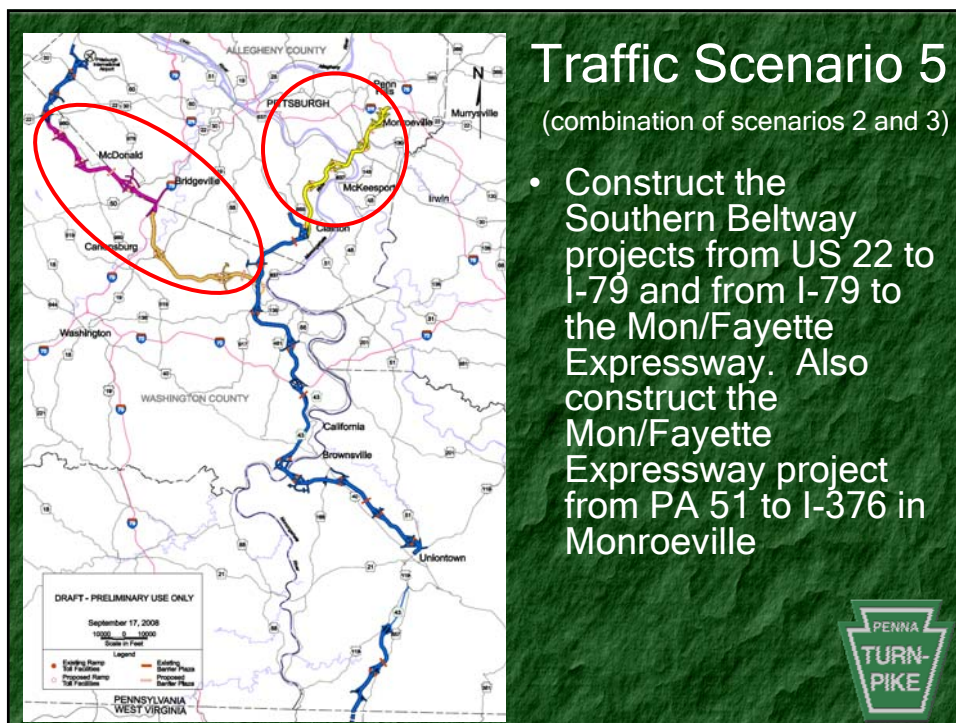
### Southern Beltway

- I-79 to MF Expressway
  - EIS Phase
  - Anticipate NEPA Clearance (ROD) by end of 2008
  - \$735 Million YOE
  - 13 miles
  - 6 Design Sections
  - ↳ ≈ 680 properties to be acquired









### Traffic Scenario 5

(combination of scenarios 2 and 3)

- Construct the Southern Beltway projects from US 22 to I-79 and from I-79 to the Mon/Fayette Expressway. Also construct the Mon/Fayette Expressway project from PA 51 to I-376 in Monroeville

## Purpose of RFCS

- Limited resources to complete 3 un-built sections of Mon/Fayette Expressway and Southern Beltway
- Gauge interest from Private Sector
- Solicit Concepts/Solutions to advance potential P3(s)



## Status of RFCS

- 3 Submissions received on 1/15/09
  - Mon Valley Public Private Partners
  - Global Via Infrastructuras
  - ACS Infrastructure Development
- Submissions being reviewed
- Interviews with respondents
- Next steps

